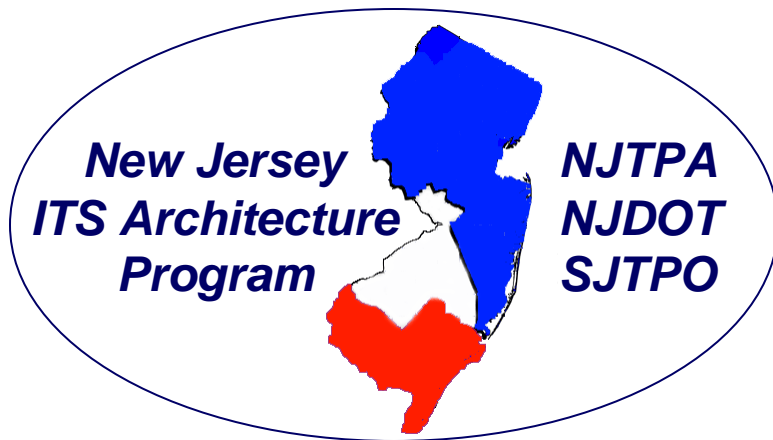


New Jersey ITS Architectures and Deployment Plans

Module 7 - Stakeholder Participation



April 14 – Newark (NJTPA)
April 15 – Vineland (SJTPO)
April 23 – Trenton (NJDOT)

Module Topics

- Regional Architecture Products
- Workshops schedule
- Workshop sign-up
- Wrap-up

Regional Architecture Products

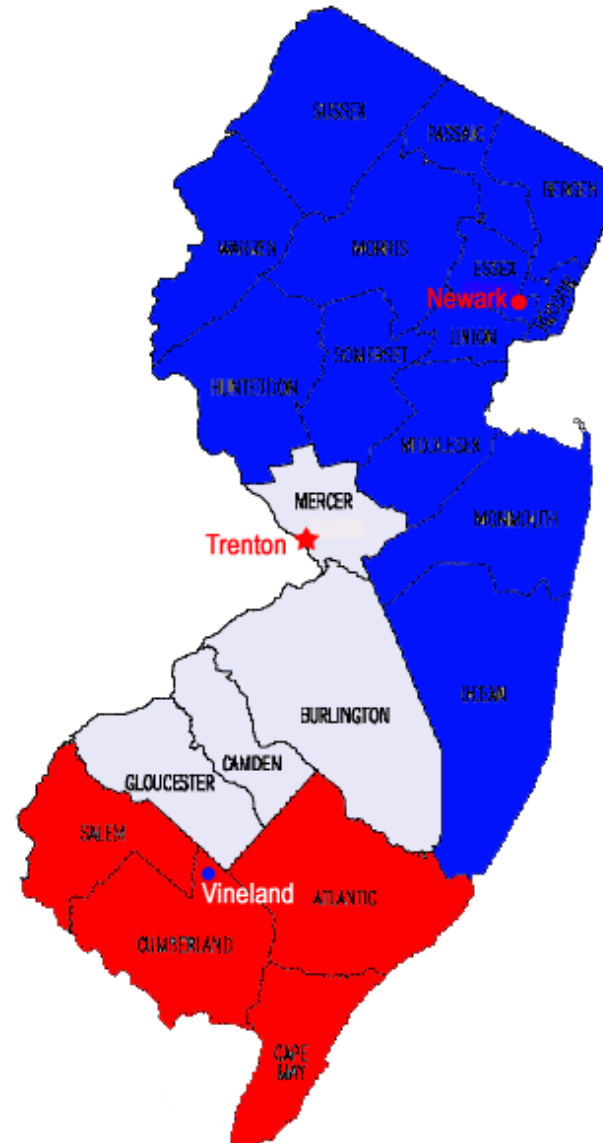


1. Region description
2. Stakeholder identification
3. Operational concept
4. Functional requirements
5. Interfaces / Information flows (System inventory)
6. Agreements
7. Standards identification
8. Project sequencing
9. Maintenance plan

1. Region Descriptions



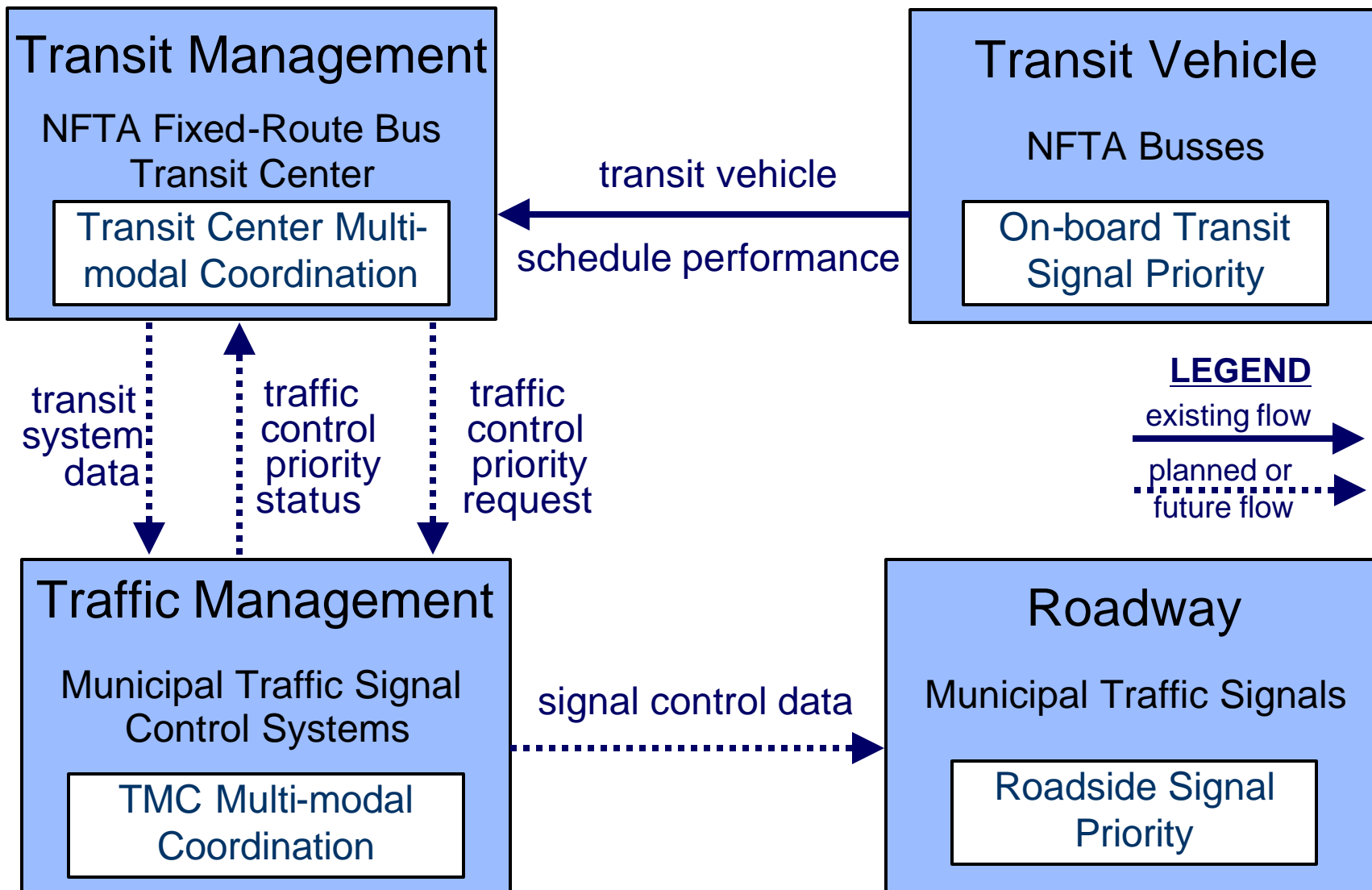
- North Jersey
- South Jersey
- Statewide



2. Stakeholder Identification

Stakeholder Name
City of Franklin Engineering Department
City of Franklin Streets Department
City of Franklin (other departments)
Franklin Transit
Franklin Police Department
Community Access Television
City of Murfreesboro
Tennessee DOT
Traveling Public
Williamson County
Nashville MPO

3. Operational Concept

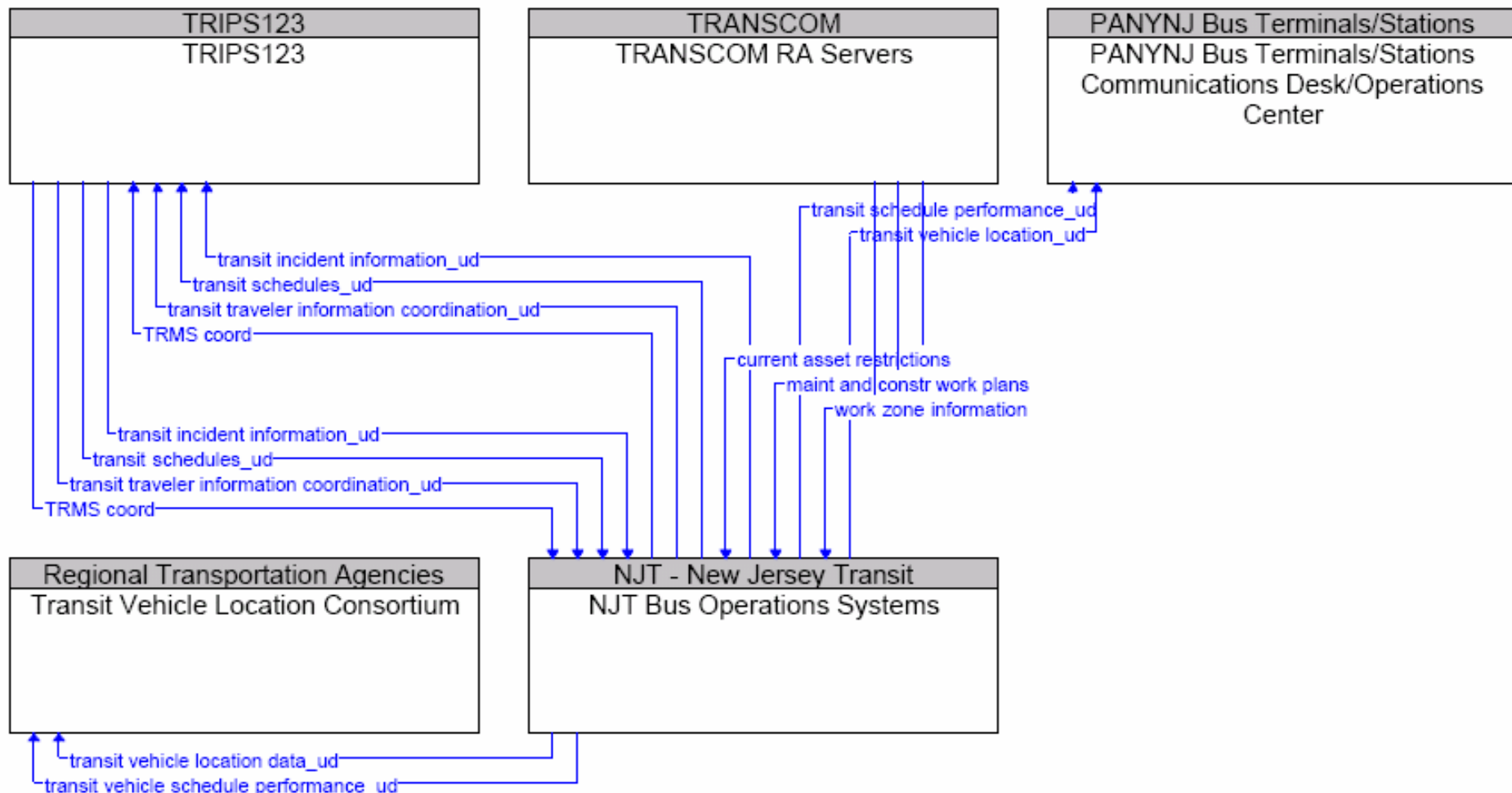


4. Functional Requirements

Functional Requirements for the NJ Transit Bus Operations Systems

- The center shall monitor the locations of all vehicles within its network.
- The center shall determine adherence of transit vehicles to their assigned schedule.
- The center shall generate transit routes and schedules based on such factors as parameters input by the system operator, road network conditions, operational data on current routes and schedules, and digitized map data.
- ...

5. Interfaces / Information Flows (and System Inventory)



6. Agreements

AREA	EXISTING	PLANNED	POTENTIAL	ISSUES
Regional Traffic Control	King County, Snohomish County, Pierce County, Bremerton, and Lynnwood have agreements for operations and maintenance with multiple jurisdictions WSDOT, Seattle, and Bellevue have agreements for data and video sharing.	WSDOT is planning additional links to multiple jurisdictions for data and video sharing.	Regional Traffic Control Ops Concept identifies potential future links, which will require agreements.	Agreements on shared control will need to be developed for relevant jurisdiction-to-jurisdiction operations. An agreement pertaining to the specific NTCIP Center-to-Center Protocol to deploy will be needed.

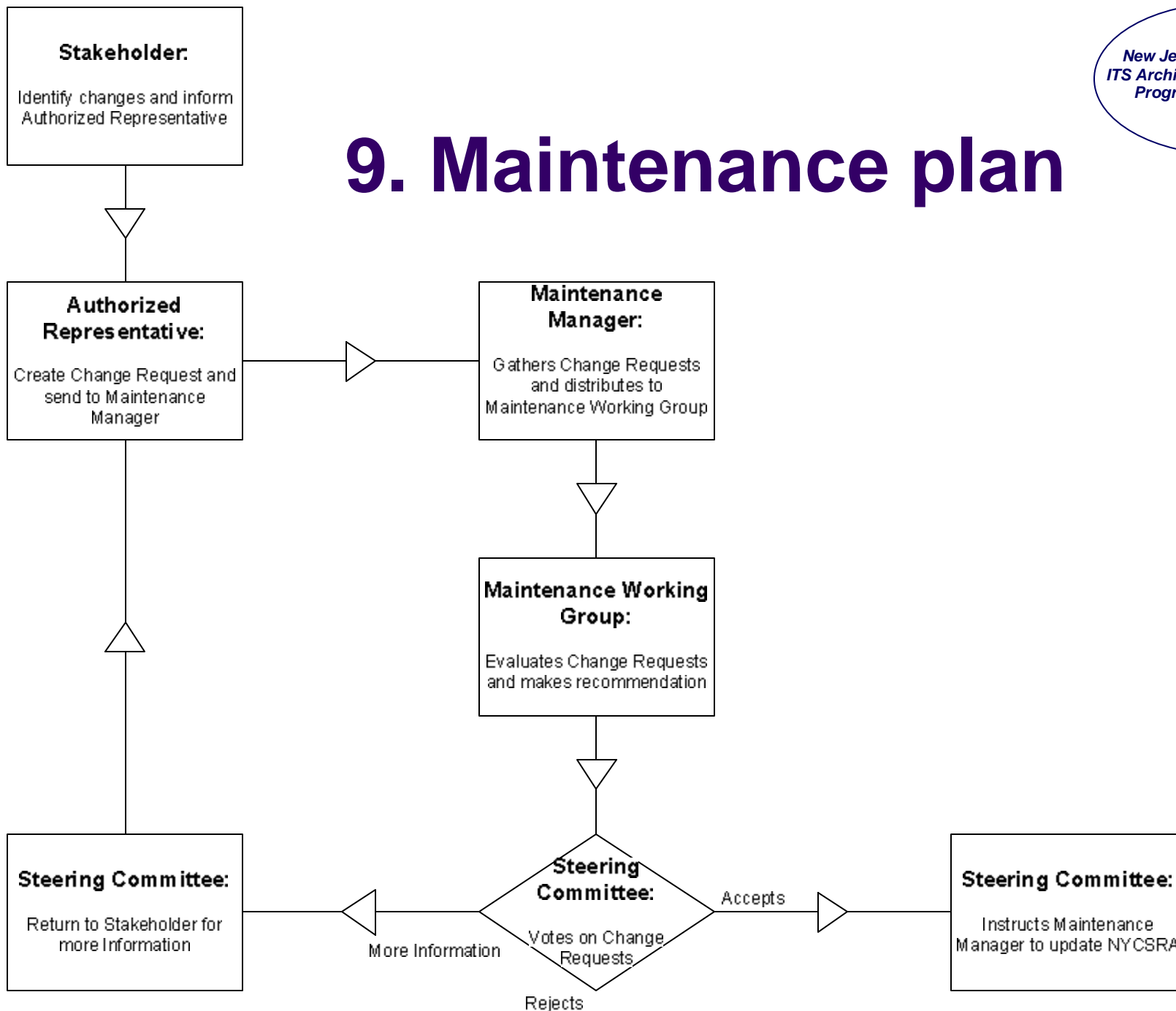
7. Standards Identification

Source Element	Destination Element	Architecture Flow Name	SDO and Standard Title	Info (Optional)
City A TMC	City A EOC	incident information	IEEE 1512-2000 - ... IEEE 1512.1-2003 - ... ITE TM 1.03 - ... ITE TM 2.01 - ... NTCIP 1104 - ... NTCIP 1105 - ... ? ?	
		resource deployment status	IEEE 1512-2000 - ... IEEE 1512.1-2003 - ... ? ?	7-10

8. Project Sequencing

Market Package	Specific Locations/Areas	Time Frame	Possible Responsible Agencies
TRANSIT MANAGEMENT			
Transit Vehicle Tracking	<i>Region:</i>		
	All transit systems	S/M	Transit Agencies
	<i>Santa Barbara County:</i>		
	SBMTD	S/M	SBMTD
	SMAT	S/M	SMAT
	<i>San Luis Obispo County:</i>		
	CCAT	S/M	CCAT
	SLO Transit	S/M	SLO Transit
	PRCATS	L	PRCATS
	SCAT	S/M	SCAT
	Ride-On	S/M	Ride-On

9. Maintenance plan



Functional Areas

- Travel and Traffic Management
- Maintenance Management
- Parking Management
- Public Transportation Management
- Inter-regional Electronic Toll/Parking/Fare Payment
- Information Archive Management
- Ports
- CVO & Ports
- Public Safety/Emergency Management/Homeland Security

Workshop Schedule



(Functional Area) Workshops	Statewide		Southern		Northern	
	<i>ITS Architecture</i>	<i>Deployment Plan</i>	<i>ITS Architecture</i>	<i>Deployment Plan</i>	<i>ITS Architecture</i>	<i>Deployment Plan</i>
Training Workshop	1 Day 4/23/04		1 Day 4/15/04		1 Day 4/14/04	
Travel and Traffic Management + Maintenance Management	1 Day 5/12/04	1 Day 6/15/04	1 Day 5/13/04	1 Day 6/16/04	1 Day 5/14/04	1 Day 6/17/04
Parking Management			½ Day 5/19/04	½ Day 6/23/04	½ Day 5/20/04	½ Day 6/24/04
Public Transportation Management	½ Day 5/18/04	½ Day 6/22/04	½ Day 5/19/04	½ Day 6/23/04	½ Day 5/20/04	½ Day 6/24/04
Inter-regional Electronic Toll/Parking/Fare Payment	½ Day 5/18/04	½ Day 6/22/04				
Information Archive Management	½ Day 5/25/04	½ Day 7/13/04	½ Day 5/26/04	½ Day 7/14/04	½ Day 5/27/04	½ Day 7/15/04
Ports					½ Day 5/27/04	½ Day 7/15/04
CVO & Ports	½ Day 5/25/04	½ Day 7/13/04				
Public Safety/Emergency Management/Homeland Security	1 Day 6/8/04	1 Day 7/20/04	½ Day 5/26/04	½ Day 7/14/04	1 Day 6/9/04	1 Day 7/21/04
Maintenance Model	½ Day 6/10/04	½ Day 7/22/04				
Final Integration Review	1 Day 8/17/04		1 Day 8/18/04		1 Day 8/19/04	7-14

Workshop Sign-up

- Identify functional areas that best apply to you
- Identify functional area workshop for your region
- Fill out sign-up form for your attendance



Wrap-up

- Questions?
- Evaluation forms